

AMT300-580 Double-layer Grout Mixer



AMT300-580 Double-layer Grout Mixer Introduction:

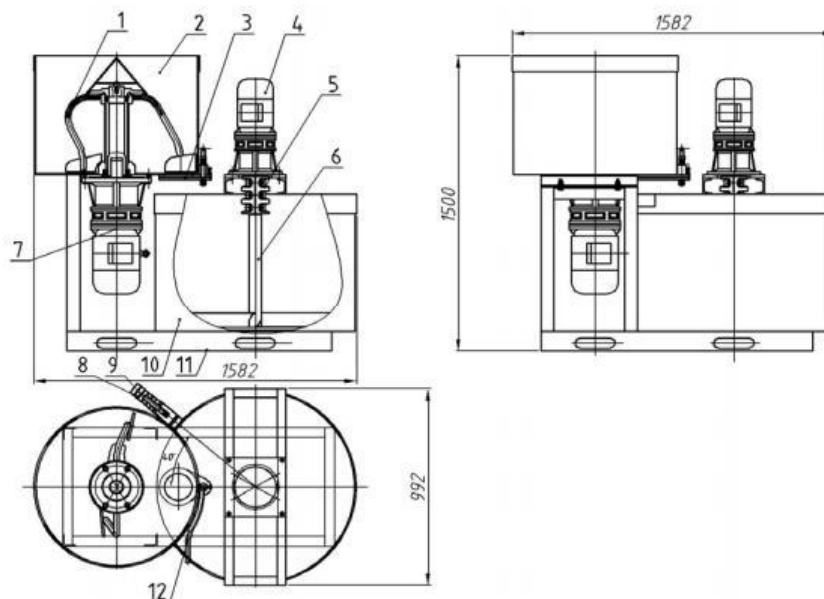
AMT300-580 Grout Mixer mainly mix cement grout and similar slurry.

Combine with grouting pump, it can grout with pressure in mining, tunnel, culvert, subway, hydropower engineering, underground excavation engineering etc.

AMT300-580 Double-layer Grout Mixer Advantages:

- AMT300-580 is composed of base, governor motor shaft
- Material barrel is driven by the positive shaft to make complex movement including horizontal move, rotation and rolling etc., which makes the material move in 3 directions along the barrel, therefore, highly uniform mixing of various material is realized
- It has larger loading capacity, short mixing time and high efficiency.

AMT300-580 Double-layer Grout Mixer Drawing Picture:



AMT300-580 Double-layer Grout Mixer Technical Data Sheet

Mixing tank capacity	300 L
Agitating tank capacity	580 L
Mixing speed	50 r/min
Agitating speed	33 r/min
Mixing Unit	4 kW
Agitating Unit	1.5 kW
Chassis	kickstand
Dimensions	1585×995×1500 mm
Weight	400 kg
Application field	Cement mortar or other materials suitable for being mixed slowly

The information contained in this document is believed to correct but A.E.G(Wuxi) Machinery Co., Limited accepts no liability for any errors it contains, and reserves the right to alter specifications without notice. Please consult the respective machine manual for all matters related to operations and maintenance.