

AHP-Series Industrial Hose Pump



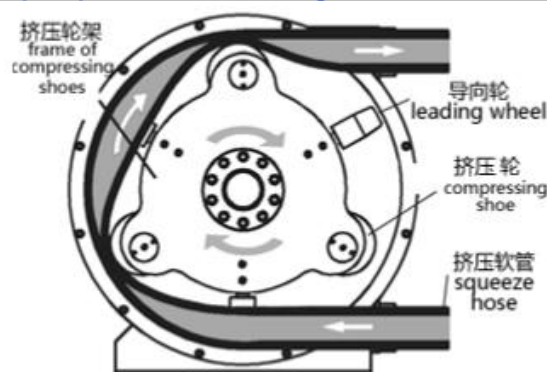
AHP-Series Industrial Hose Pump Introduction:

AHP series industrial hose pump is a kind of peristaltic pump, which is suitable for handling aggressive, high viscosity, high density products, such as abrasive slurries, corrosive acids, gaseous liquids, sand/cement mortar, liquid accelerator, etc. And also is used for dosing pump with 1% repeat precision. The work pressure can reach 1.5 MPa and the output can be 50 cubic meters/hour. Our pumps are widely applied at home and abroad.

The main application includes:

- Construction – cement, coatings, spray concrete, brick and roof tiles, colourants and aggregate.
- Chemical – corrosive acids, and bases.
- Textiles – fibres, dyes and additives.
- Paint and pigments – dispersion mill feed, pigment and latex transfer.
- Water and wastewater treatment – lime, kalic, sodium hypochlorite, ferric chloride and sludges.
- Printing and packaging – varnishes, inks, coatings and adhesives.
- Mining and mineral separation – tailing Slurries, sludges and reagents.
- Ceramics and glass – fine china.
- Breweries – yeast, diatomaceous earth, Flocculants, stabilizers, filter press feed.
- Food and beverage – CIP applications, Wine, brewery, dairy, bakery, flavourings and additives.
- OEM – versions available for system Suppliers.

AHP-Series Industrial Hose pump Structure drawing:



AHP-Series Industrial Hose pump Features:

Self-priming with high suction
Can be dry-running
Be Reversible
No metal friction within pipeline
Fluid only through the hosepipe
Easy maintenance, low cost, short down time
Peristaltic hose is the only consumable part

Anti-Corrosive
Anti-Abrasion
Adapt to sensitive fluids
High viscosity fluids
High density fluids
Large grain
High precision displacement ($\pm 1\%$)

Logical pressure onto the roller axis
Lengthen the hosepipe lifetime
Outstanding suction capacity
High pressure performance – 1.5Mpa
Strong anti-interference conveying system

AHP-Series Industrial Hose pump Hose's Structure


1. High elasticity outer layer
2. High Intensity reinforcement layer
3. Wear-resisting rubber inner layer

AHP-Series industrial hose pump Technical Data Sheet:

Model Name	Output l/h	Pressure MPa	Hose ID mm	Hose OD mm	Hose length mm	Rev. r/min	Max. Particle Dia. mm	Max. Suction m	Motor Power kW
AHP10	60	0.6	10	24	520	45	2	2	0.37
AHP10B	100	0.6	10	24	520	80	2	2	0.37
AHP15	210	0.6	15	36	715	45	2	2	0.55
AHP15B	300	0.6	15	36	715	75	2	2	0.55
AHP25	800	1.5	25	49	900	50	3	3	1.1
AHP25B	1300	1.5	25	49	900	80	3	3	1.5

AHP32	1300	1.5	32	60	1030	50	3	4	2.2
AHP32B	1800	1.5	32	60	1030	75	3	4	2.2
AHP38	2000	1.5	38	66	1150	40	5	4	2.2
AHP38B	2700	1.5	38	66	1150	55	5	4	3.0
AHP38C	3500	1.5	38	66	1150	70	5	4	4.0
AHP50-558	4200	1.5	51	84	1360	35	6	5	4.0
AHP50-558B	5400	1.5	51	84	1360	45	6	5	5.5
AHP50-680	6300	1.5	51	84	1750	35	6	5	7.5
AHP50-680B	8000	1.5	51	84	1750	45	6	5	7.5
AHP65-680	9200	1.2	64	100	1750	40	8	5	7.5
AHP65-680B	12000	1.5	64	100	1750	45	8	5	11.0
AHP65-770	13500	1.2	64	100	1900	45	8	5	11.0
AHP65-770B	16500	1.0	64	100	1900	55	8	5	11.0
AHP76-770	18000	1.0	76	116	1900	45	10	5	11.0
AHP76-770B	22000	1.0	76	116	1900	55	10	5	15.0
AHP76-915	24000	1.0	76	116	2500	40	10	5	15.0
AHP76-915B	30000	1.0	76	116	2500	50	10	5	18.0
AHP100	33500	1.0	102	148	2500	35	15	5	18.0
AHP100B	42000	0.75	102	148	2500	45	15	5	18.0

The electric motor in the above list is 380V50Hz, IP55.

The output of the pumps in the above list is tested with water.

The client can request the technical data of the pump body and hosepipe.

According to the conveying medium, the squeeze hoses are of wearable, alkali proof, acid-resistant, organic solvent resistant etc.

The exact overall measurement and weight depends on the exact type and installation method.

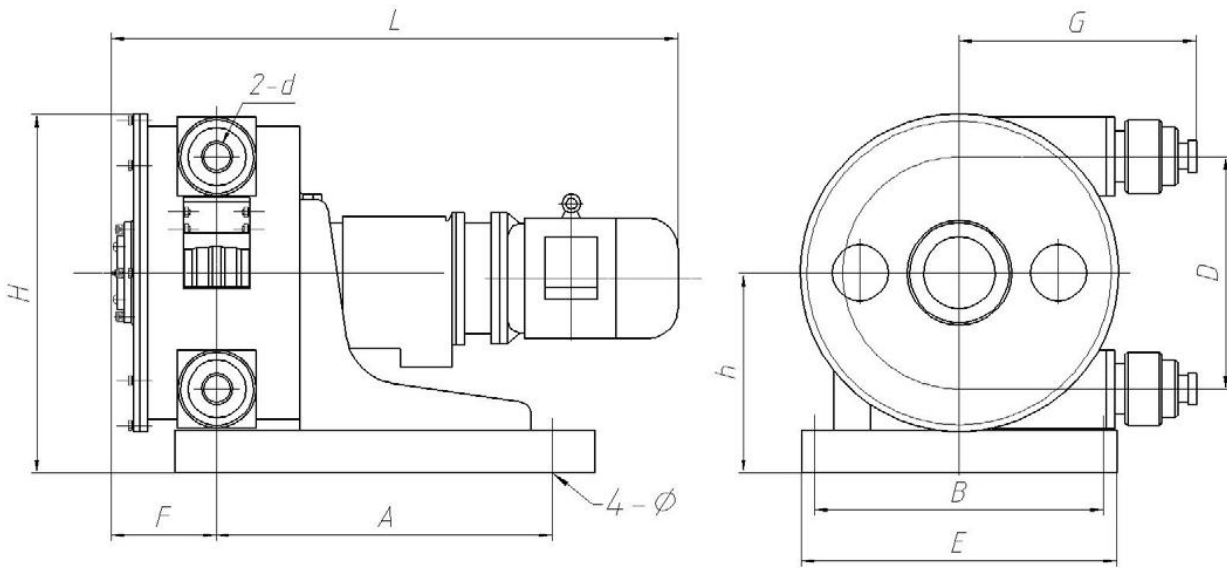
AHP-Series industrial hose pump Model Tables:

<p>Max flow</p> <p>Capacity</p> <p>Max discharge pressure</p> <p>Max temperature</p> <p>Hose ID</p> <p>Port size, optional flange or Threaded nipple</p> <p>Minimum starting torque</p>	<p>140 L/h</p> <p>0.022 L/rev</p> <p>6 bar</p> <p>70 °C</p> <p>10 mm</p> <p>16 mm</p> <p>55 Nm</p>	<p>AHP10-190</p> <p>Legend: 连续工况, Continuous duty 间歇工况, Intermittent duty</p>
--	---	---

<p>Max flow Capacity Max discharge pressure Max temperature Hose ID Port size, optional flange or Threaded nipple Minimum starting torque</p>	<p>490 L/h 0.077 L/rev 6 bar 70 °C 15 mm 19 mm 65 Nm</p>	<p>AHP15-204</p> <p>净功率(kW) 0.35 0.30 0.25 0.20 0.15 0.10</p> <p>转速(rpm) 15 30 45 60 75 90 105 120 流量(L/h) 70 140 210 280 350 420 490 560</p> <p>连续工况 Continuous duty 间歇工况 Intermittent duty</p>
<p>Max flow Capacity Max discharge pressure Max temperature Hose ID Port size, optional flange or Threaded nipple Minimum starting torque</p>	<p>1980 L/h 0.275 L/rev 15 bar 70 °C 25 mm 25 mm 120 Nm</p>	<p>AHP25-308</p> <p>净功率(kW) 1.5 1.25 1.0 0.75 0.5 0.25</p> <p>转速(rpm) 20 40 60 80 100 120 140 流量(L/h) 330 660 990 1320 1650 1980 2310</p> <p>连续工况 Continuous duty 间歇工况 Intermittent duty</p>
<p>Max flow Capacity Max discharge pressure Max temperature Hose ID Port size, optional flange or Threaded nipple Minimum starting torque</p>	<p>3000 L/h 0.416 L/rev 15 bar 70 °C 32 mm 32 mm 220 Nm</p>	<p>AHP32-308</p> <p>净功率(kW) 2.5 2.0 1.5 1.0 0.5</p> <p>转速(rpm) 20 40 60 80 100 120 140 流量(L/h) 500 1000 1500 2000 2500 3000 3500</p> <p>连续工况 Continuous duty 间歇工况 Intermittent duty</p>
<p>Max flow Capacity Max discharge pressure Max temperature Hose ID Port size, optional flange or Threaded nipple Minimum starting torque</p>	<p>4500 L/h 0.816 L/rev 15 bar 70 °C 38 mm 38 mm 300 Nm</p>	<p>AHP38-400</p> <p>净功率(kW) 3.0 2.5 2.0 1.5 1.0 0.5</p> <p>转速(rpm) 20 40 60 80 100 流量(L/h) 980 1960 2940 3920 4900</p> <p>连续工况 Continuous duty 间歇工况 Intermittent duty</p>

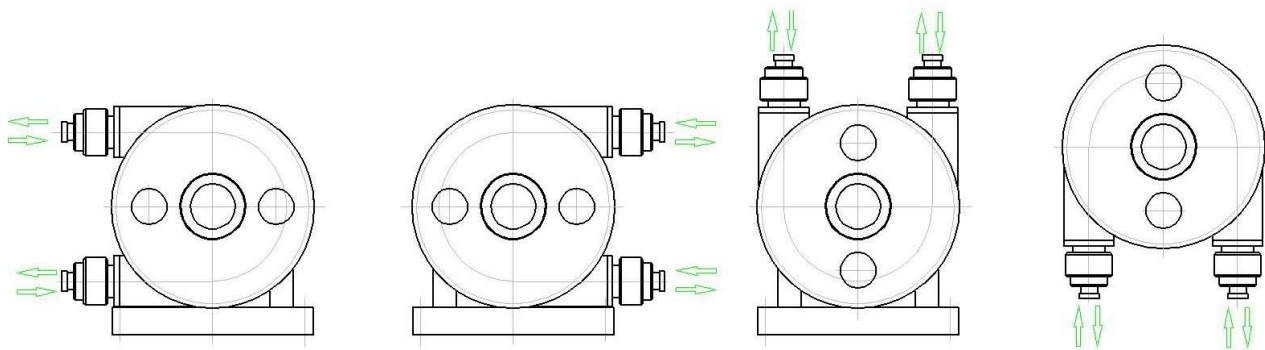
<p>Max flow Capacity Max discharge pressure Max temperature Hose ID Port size, optional flange or Threaded nipple Minimum starting torque</p>	<p>8400 L/h 2 L/rev 15 bar 70 °C 50 mm 50 mm 550 Nm</p>	<p>AHP50-558</p> <p>Legend: 连续工况 Continuous duty 间歇工况 Intermittent duty</p>
<p>Max flow Capacity Max discharge pressure Max temperature Hose ID Port size, optional flange or Threaded nipple Minimum starting torque</p>	<p>12600 L/h 3 L/rev 15 bar 70 °C 50 mm 50 mm 650 Nm</p>	<p>AHP50-680</p> <p>Legend: 连续工况 Continuous duty 间歇工况 Intermittent duty</p>
<p>Max flow Capacity Max discharge pressure Max temperature Hose ID Port size, optional flange or Threaded nipple Minimum starting torque</p>	<p>18400 L/h 4.38 L/rev 12 bar 70 °C 65 mm 65 mm 950 Nm</p>	<p>AHP65-680</p> <p>Legend: 连续工况 Continuous duty 间歇工况 Intermittent duty</p>
<p>Max flow Capacity Max discharge pressure Max temperature Hose ID Port size, optional flange or Threaded nipple Minimum starting torque</p>	<p>21000 L/h 5 L/rev 12 bar 70 °C 65 mm 65 mm 1100 Nm</p>	<p>AHP65-770</p> <p>Legend: 连续工况 Continuous duty 间歇工况 Intermittent duty</p>

<p>Max flow Capacity Max discharge pressure Max temperature Hose ID Port size, optional flange or Threaded nipple Minimum starting torque</p>	<p>24000 L/h 6.66 L/rev 10 bar 70 °C 76 mm 76 mm 1700 Nm</p>	<p>AHP76-770</p> <p>净功率(kW) 14.0 12.0 10.0 8.0 6.0 4.0 2.0</p> <p>转速(rpm) 10 20 30 40 50 60 70 流量(l/h) 4000 8000 12000 16000 20000 24000 28000</p> <p>连续工况 Continuous duty 间歇工况 Intermittent duty</p>
<p>Max flow Capacity Max discharge pressure Max temperature Hose ID Port size, optional flange or Threaded nipple Minimum starting torque</p>	<p>28900 L/h 8 L/rev 10 bar 70 °C 76 mm 76 mm 1900 Nm</p>	<p>AHP76-915</p> <p>净功率(kW) 14.0 12.0 10.0 8.0 6.0 4.0 2.0</p> <p>转速(rpm) 10 20 30 40 50 60 流量(l/h) 4800 9600 14500 19300 24000 28900</p> <p>连续工况 Continuous duty 间歇工况 Intermittent duty</p>
<p>Max flow Capacity Max discharge pressure Max temperature Hose ID Port size, optional flange or Threaded nipple Minimum starting torque</p>	<p>43300 L/h 16 L/rev 7.5 bar 70 °C 100 mm 100 mm 3200 Nm</p>	<p>AHP100-915</p> <p>净功率(kW) 18.0 12.0 6.0</p> <p>转速(rpm) 20 30 40 50 流量(l/h) 19250 28875 38500 48125</p> <p>连续工况 Continuous duty 间歇工况 Intermittent duty</p>

AHP-Series Hose Pump Dimension of structure:


	A	B	D	E	F	G	H	L	h	2 - d	4 - Φ
AHP10	300	160	165	200	50	180	245	420	135	10	12
AHP10B											
AHP15	270	225	190	250	30	190	295	500	160	15	12
AHP15B								580			
AHP25	500	300	246	360	98	245	410	675	230	25	14
AHP25B								700			
AHP32	500	300	246	360	98	245	410	700	230	32	14
AHP32B								756			
AHP38	600	460	380	520	135	350	550	820	300	38	14
AHP38B								870			
AHP38C											
AHP50-558	700	540	490	600	190	460	665	1000	360	51	18
AHP50-558B								1100			
AHP50-680		690	635	750	220	540	800	1150	420		
AHP50-680B											
AHP65-680	800	690	580	750	220	540	800	1195	420	65	18
AHP65-680B								1240			
AHP65-770	900	760	670	800	260	620	900	1340	480		
AHP65-770B								1340			
AHP76-770	900	760	655	800	260	620	900	1340	480	76	18
AHP76-770B								1400			
AHP76-915	1000	860	775	900	320	700	1050	1500	550		
AHP76-915B								1530			25
AHP100	1000	860	740	900	320	700	1050	1600	550	100	25
AHP100B											

AHP series industrial hose pump Installations



Application examples of AHP-series Industrial Hose Pump



Spraying Mortar



Road Construction



Mud Pump



Paper pulp



Tunnel Construction



Alcoholic drink



Pump dyestuff



Polluted water



Pump jam

The information contained in this document is believed to correct but A.E.G(Wuxi) Machinery Co., Limited accepts no liability for any errors it contains, and reserves the right to alter specifications without notice. Please consult the respective machine manual for all matters related to operations and maintenance.